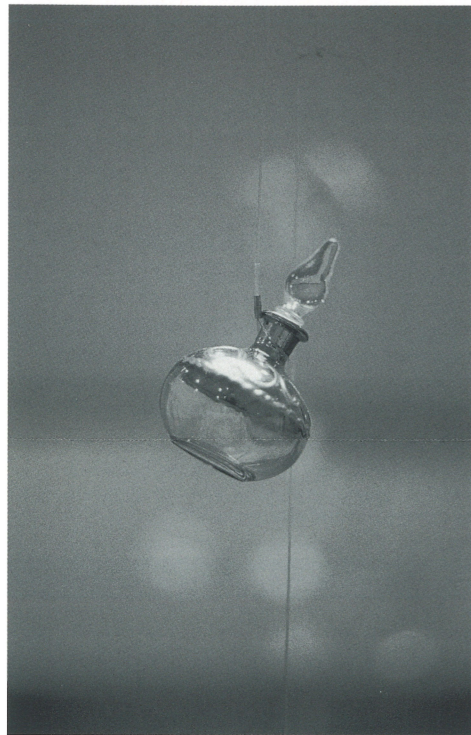


The Iris Fisher Gallery

The premier exhibition space of the centre which hosts nationally significant exhibitions by established artists and includes major showings of solo artists and group exhibitors.



Carole Shephard: *off site*, detail

Carole Shephard off site

Sunday 23 June – Sunday 11 August
Opening function: Sunday 23 June 11am
Floor talk: Sunday 21 July, 2pm

The museum context has, for some time, been viewed as a culturally and politically loaded environment with systems of collecting, ordering, and displaying which are selective and elevate the status of some histories over others.

Carole Shephard, one of New Zealand's most renowned artists, has been undertaking a Doctorate of Fine Arts in which her area of artistic exploration has involved an investigation into these systems of ordering and controlling information. Her explorations resulted in The Museum of Cultural Anxiety, an alternative exhibition space in which she explored the politics of collecting and exhibiting.

In *off site* at **te tuhi – the mark**, Shephard presents an installation of aluminium scaffold towers on which glass objects from The Museum of Cultural Anxiety are intermingled with private collections and objects from generous donors.

The exhibition, *off site*, allows the viewer to participate in the illusion and to construct stories that relate to their own lives and experiences but also witness the ways viewing can be manipulated and controlled.

Carole Shephard will be talking about *off site* and issues relating to her work on Sunday 21 July at 2pm. Entry is free and all are welcome.

Lauren Lysaght Citizen Cane No. 52025

Saturday 17 August – Sunday 29 September
Opening Function: Saturday 17 August, 11am
Floor Talk: Sunday 15 September, 2pm
Toured by Sarjeant Gallery, Wanganui

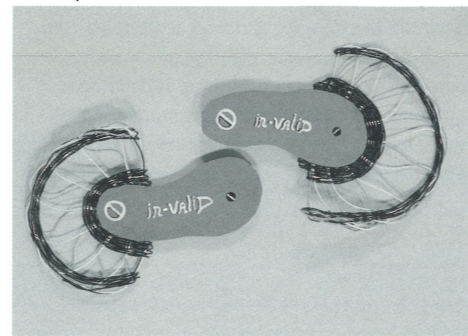
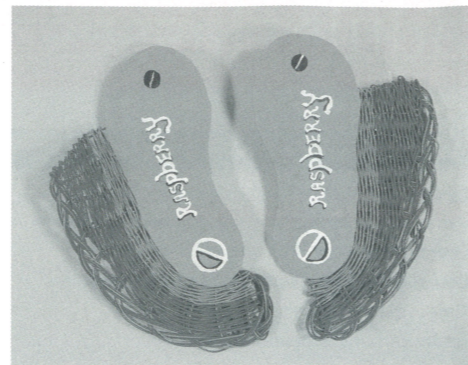
Issues surrounding disability in an able-bodied world are the focus of Lauren Lysaght's exhibition *Citizen Cane No. 52025*.

The candy-coloured plastic-coated cane used to create the pieces in the exhibition gives the show an up-beat appearance while at its heart is a serious subject which affects us all but is sometimes overlooked in our society.

This exhibition brings together the artist's personal experiences and in particular her struggle with mobility. Within that context she has woven brightly coloured plastic cane into uncomfortable and impractical shoes as well as the license plate numbers of able bodied people parking in spaces reserved for the disabled.

Lauren Lysaght created *Citizen Cane No. 52025* during her six-month residency at Wanganui's Tylee Cottage. As an artist she has developed a career which examines and challenges social issues, often involving communities and community groups to focus attention on their specific marginalised or unrecognised concerns.

Lauren has undertaken some of the most major residencies all over New Zealand, exhibited in



Lauren Lysaght: *Raspberries*, detail

many solo and groups exhibitions throughout the country, and has recently permanently moved to Auckland and is currently artist in residence at Unitec School of Art and Design.

The artist will be speaking about her exhibition and work at the gallery on Sunday 15 September at 2pm. Entry is free and all are welcome.

The Studio Gallery An intimate gallery which hosts works by established and emerging artists. It is also ideal for exhibitions which explore installation.

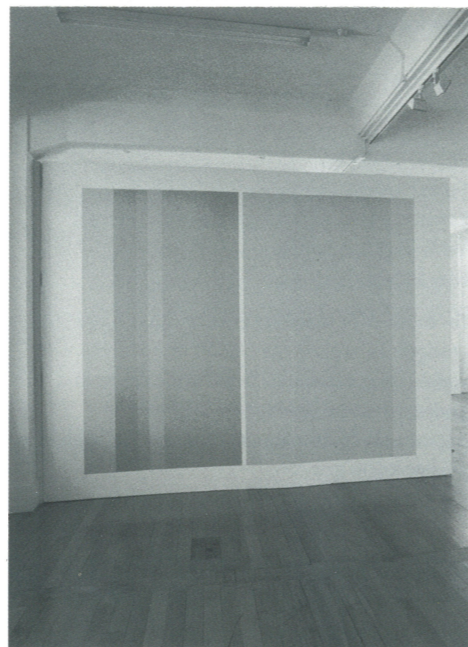
Leigh Martin Close-ups of the Horizon #2 wall paintings

Saturday 17 August – Sunday 29 September
Opening Function: Saturday 17 August, 11am

The colours and patterns of *Close-ups of the Horizon #2* are derived from a photographic image of the exhibition site. This image is scanned into a computer and then enlarged to such an extent that the space is translated in to a series of coloured pixels. These coloured pixels are then matched to paint colour samples and applied to the wall.

The artist's intentions are two-fold; to raise questions relating to modes of art production and the role of art in popular culture, and the use of paint to achieve spatial ambiguities.

Leigh Martin trained at the Glasgow School of Art and has been a practising artist since 1992. He has exhibited widely both in New Zealand and overseas. Martin lives and works in Auckland and teaches at Elam School of Fine Arts.



Leigh Martin: *Close-ups of the Horizon #2*, detail

The Centre Gallery

A wonderful community exhibition space. In this area we show the work of emerging artists, record particular cultural events, and support the work of community artists.

Manukau School of Visual Arts University of Auckland Graduates Exhibition

Friday 21 June – Sunday 7 July

Since its opening in 1995, the Manukau School of Visual Arts has established itself as an art school of choice for many students from the Manukau and wider Auckland area. The school fosters a multi-disciplinary approach to art making.

This exhibition celebrates a selection of its best graduates work from 2001. The works demonstrate the rich, diverse and individual approaches taken by students at the school.

Graduating students exhibiting work are: Jackie Anderson, Alison Barnett, Trevor Bayly, Roger Bymolt, Kiran Ghandi, Ngaire Hamilton, Caroline Hood, Queenie Kam, Anthea Lindorp, Audrey Smith, Julia Tseng.

The Cameo Project

This project profiles the work of emerging artists.



Josephine Do: *Clothes Parade*, detail

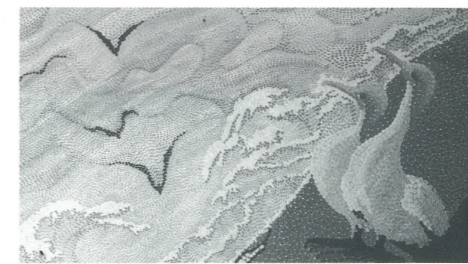
Josephine Do China Today

Saturday 17 August – Sunday 29 September
Opening Function: Saturday 17 August, 11am

Being Chinese and a woman is as important to Josephine Do as being a New Zealander and an academic. She says she occupies the space between two cultures, between 'self' and 'other', between 'us here' and 'them over there'. In her work she explores the interlocking issues of identity and difference.

For Josephine Do, the concept of identity is bound up with the process of transference and notions of equivalence; the contrasting of ideas and values of one culture with another and the need to negotiate the meeting place where exchange can occur.

Do's work attempts to engage viewers with issues of cultural difference and nationality. Through questioning her own identity as Chinese, as a New Zealander, she asks that visitors question and analyse their own position, and that they celebrate that difference and that sameness.



Freeman Hau: *The National Treasure*, detail

The Hong Kong Boys Fred Choi, Freeman Hau, Jim Kong

Saturday 13 July – Sunday 28 July

Three outstanding painters immigrated to New Zealand from Hong Kong in the 1990's finding themselves living not too far away from each other in Auckland. They have joined together to exhibit their very different painting styles in this show.

Fred Choi works in watercolour, undertaking cubist influenced landscape painting; Jim Kong using oils paints, producing evocative wild-life and forest scenes; while Freeman Hau uses pointillist techniques to create inspiring wild-life scenes.

Marge Barley A Life's Perspective

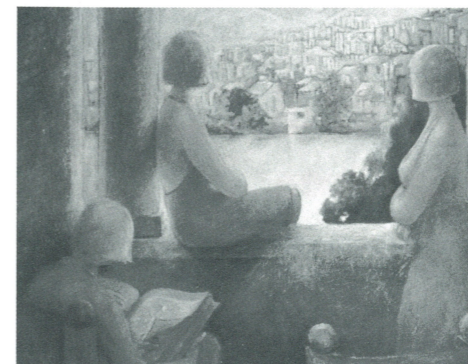
Saturday 14 September – Sunday 29 September
Opening Function: Saturday 14 September 4.30

Marge Barley (1929 – 2001) was a complex person who dedicated her life to the creative arts. Not only was she an outstanding painter, but she also involved herself in creating pottery sculpture, writing poetry and prose, and she was a much revered tutor.

Always political and often taking on controversial subjects, Marge Barley was interested in exploring human relationships in her work. These subjects included feminist themes, love, isolation, aging, and the death experience.

This exhibition, organised and selected by Marge Barley's family is a retrospective sample of her work, including watercolours, oils and acrylics as well as her writing and ceramic sculptures.

Marge Barley: *Women Looking Out Window*



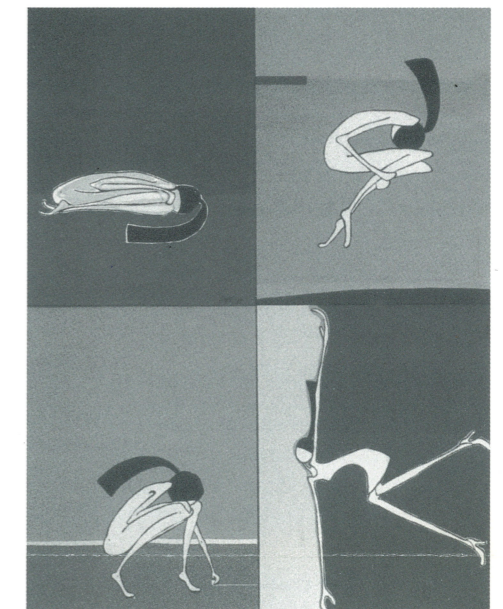
Jacqui and Roseanne Kenny Wonleka's Way

Saturday 3 August – Sunday 18 August

Wonleka's Way is a collection of paintings exploring woman in a fun bright and interesting way, painted by two sisters – Roseanne and Jacqui Kenny.

Each painting consists of a stylistic portrait of the character Wonleka. The artists say 'Wonleka is a light hearted perspective on our thoughts of women and all their beauty. The beauty of form, movements, thoughts unknown and use of colours in these paintings are all elements used to portray Wonleka and her ways.'

Roseanne has a Bachelor of Graphic Design, and Jacqui is a freelance illustrator with a background in design and passion for art. They started painting together as a weekend hobby.



Jacqui and Roseanne Kenny: *Wonleka's Way*

te tuhi – the mark Children's Classes Exhibition

Friday 23 August – Sunday 8 September

Every day after school, children between the ages of 5 and 16 participate in a range of creative activities at **te tuhi – the mark**. This exhibition gives them the opportunity to show off the new skills they have learnt through their classes and see their art work exhibited in a gallery context. Equally it allows the public to enjoy the wonderful products of children's imagination on display!

Tutors: Barbara Templeton, Denise Muir, Rebecca Allcock, Dawn Dixon, Nooroo Te Hira, Helen Finlayson, Tanja Nola.