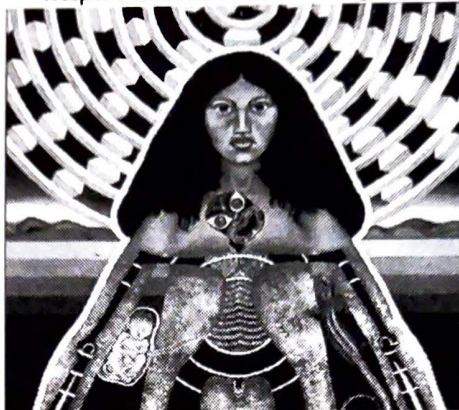


# FISHER GALLERY

13b Reeves Rd, PO Box 51222, Pakuranga, Manukau City, Aotearoa New Zealand  
telephone (09) 577 0138 facsimile (09) 577 0139  
email [candy@fisher.org.nz](mailto:candy@fisher.org.nz)  
<http://webnz.co.nz/fishergallery/>

News Release

8 May 2000



## Contemporary Maori artists' work at the Fisher Gallery *Into the Present / ma muri ma mua* Friday 19 May - Sunday 18 June 2000

On at the Fisher Gallery from Friday the 19th of May, *Into the Present/ma muri ma mua* is an exhibition of contemporary Maori art. Developed by Manawatu Art Gallery from their collection and toured to the Fisher Gallery, the exhibition features the work of 15 well-known contemporary artists, including Ralph Hotere, Robyn Kahukiwa, John Bevan Ford and Shane Cotton.

This exhibition explores multiple definitions of Maori art in an effort to uncover the variation that exists among artists of Maori heritage. The exhibition offers a sample of work produced by Maori artists over the last thirty years.

Work by artists such as Sandy Adsett, John Bevan Ford, Buck Nin, Faith McManus, Kura Te Waru-Rewiri and Robyn Kahukiwa illustrate the influence of customary arts on recent visual art themes. While artwork by Albert Mc Carthy, Ralph Hotere, Shane Cotton and Peter Robinson encourage critical analysis of the issues surrounding the definition of Maori visual art.

*Into the Present / ma muri ma mua* has been shown at two venues in the lower North Island, but this is the first time the exhibition has been seen in the Auckland region. Fisher Gallery director, Candy Elsmore says

*Into the Present / ma muri ma mua is an excellent opportunity to see works by important artists of Maori descent and compare and contrast the ideas and issues raised by the variety of works in the exhibition. We are very excited to be working with the Manawatu Art Gallery to bring these works to Auckland.*

*Into the Present / ma muri ma mua* runs until Sunday the 18 June. The Fisher Gallery is open from 10 am to 4 pm, Monday to Friday, and 1 to 4 pm weekends. The Gallery is closed on public holidays. Entry is free of charge.

- ENDS-

For more info: Candy Elsmore, director, Fisher Gallery ph. 577 0138, fax 577 0139

---